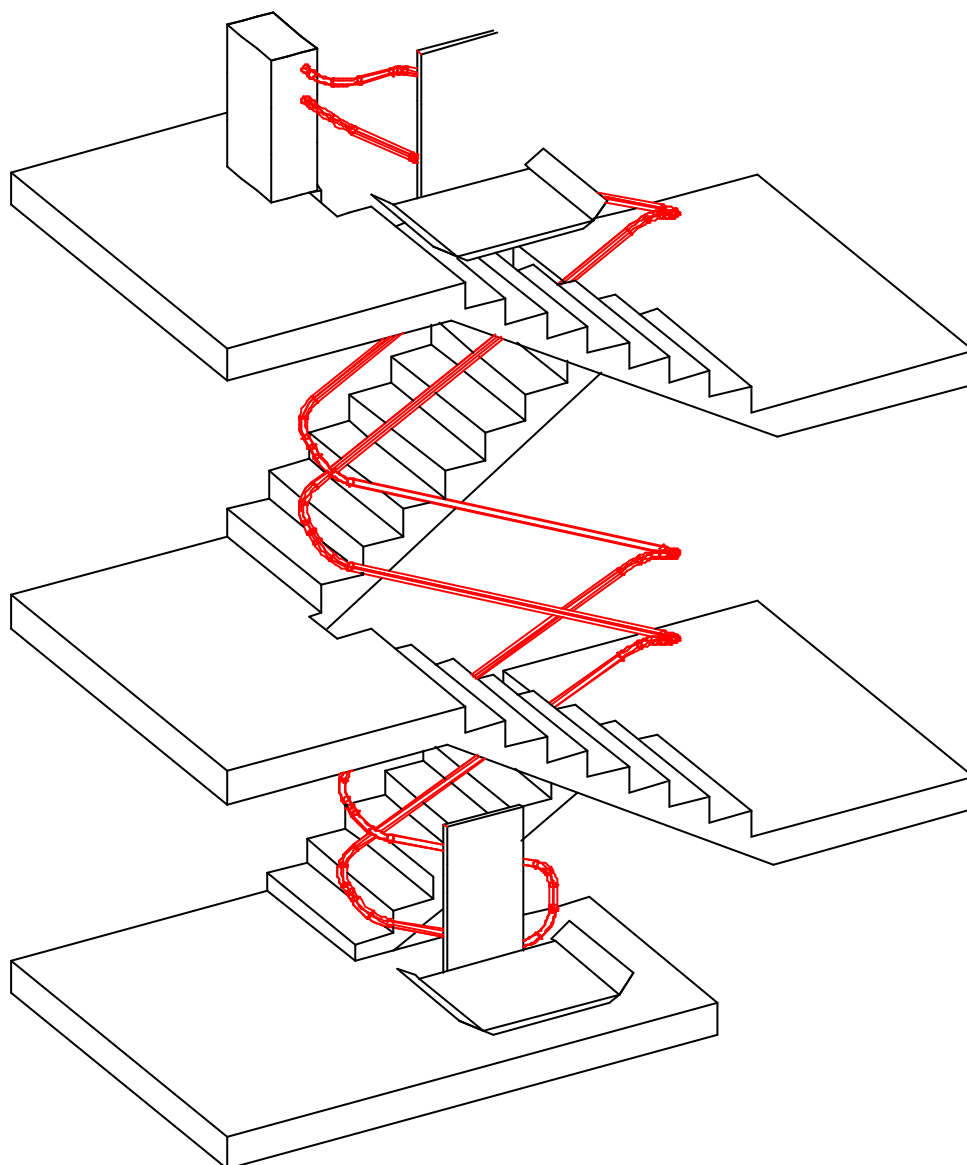


LEHNER **LIFTTECHNIK**

USER HANDBOOK



CONTENTS

INTRODUCTION.....	2
KEY TO SYMBOLS USED IN THIS HANDBOOK.....	3
ATTENTION - SAFETY FIRST	4
<i>OMEGA</i> STAIRLIFT.....	6
General layout:	6
Technical data.....	7
Carriage with platform for wheelchairs	8
Carriage with seat performance.....	8
Horizontal railway.....	8
Drive type S.....	9
Drive type K	9
OPERATION.....	10
General.....	10
Main power switch.....	10
carriages equipped with a manual platform:.....	11
Wall controls	11
Driving/Moving onto the platform.....	12
Travelling.....	12
Leaving the platform	13
carriages equipped with automatic platforms and barriers:	14
Wall controls	14
Driving/Moving onto the platform.....	15
Travelling.....	15
Leaving the platform.....	16
TROUBLESHOOTING.....	17
RESCUE OF PASSENGERS	20
OPTIONAL FEATURE	23
Safety pad	23
ERECTION	24
Electrical installation.....	24
Installation	24
Dismantling	24
MAINTENANCE.....	25
Check-up and care	25

Key to Symbols Used in this Handbook

The following signs stress important passages:



Pay attention to all paragraphs marked with this sign. These paragraphs contain important hints that will insure flawless operation of the lift.



WARNING! Important safety advice! Observing these instructions greatly reduces the possibility of hazardous situations.



Pay attention! Do not execute the actions marked with this sign!

ATTENTION - SAFETY FIRST

Please pay careful attention to the next points/instructions!



User group:

Only specially instructed persons are to use the **OMEGA** stairlift and must take responsibility for all others who are present.

Users who are not able to fulfil these requests, as well as children, need an attendant person who takes responsibility over the user.



Setup area:

OMEGA lifts can be mounted on staircases and ramps. The lift, however, is not designed for use in unusual areas (like areas in danger of explosion, areas surrounded by aggressive chemical substances, ...). Outdoor use is possible, but the parts must remain clear of ice and snow in winter.



Keys:

Keys should be kept in a safe place, away from those who are not to use the lift. Remove the key from the control when not in use.



Provision application

- ➔ **OMEGA** stairlifts must only be used for the transport of persons in wheelchairs or sitting on the fold down seat.
- ➔ Never use the stairlift in the standing position.
- ➔ **OMEGA** stairlifts must not be used for freight transportation.
- ➔ Lock both the lift and the platform after use. Do not let children play on the lift.
- ➔ Do not exceed the maximum platform load or maximum wheelchair size.
- ➔ Pay attention to the instructions provided on the lift.
- ➔ Pay attention to the following points for the correct use of the stairlift.

**Load capacity:**

The maximum load is indicated on the sideboard of the carriage.

Serial load: 150 kg (330 lb) for the wheelchair platform
 130 kg (286 lb) for seat performance.
(Optionally a plant with a maximum load up to 225 kg is available).

Do not exceed this limit!



Keep hands and fingers away from the back of the carriage! Passengers must remain in the wheelchair or seat while the lift is operating.



Persons walking up or down the stairs while the lift is being operated must avoid contact with the platform. Platform users should take into consideration that the platform needs more space in a bend than on a straight railway. Therefore, before moving, look to see if anyone is using the stairs or if there are any obstacles.

**Emergency stop**

An emergency stop is fitted on the carriage. In case of emergency press the red STOP-switch and the lift will stop immediately. To unclamp the STOP-switch, it is necessary to press it once more or to turn it clockwise.



OMEGA stairlifts are equipped with the following safety features:

- drive with self-locking gear and break
- overspeed governor
- mechanical bolted barriers
- optional: safety pads around the platform used for carriages without ramps
 safety pads on the underside of the platform



Do not disable any safety feature of the lift by modifying mechanical or electrical parts of the lift. Please contact LEHNER or one of its authorised partners for service!



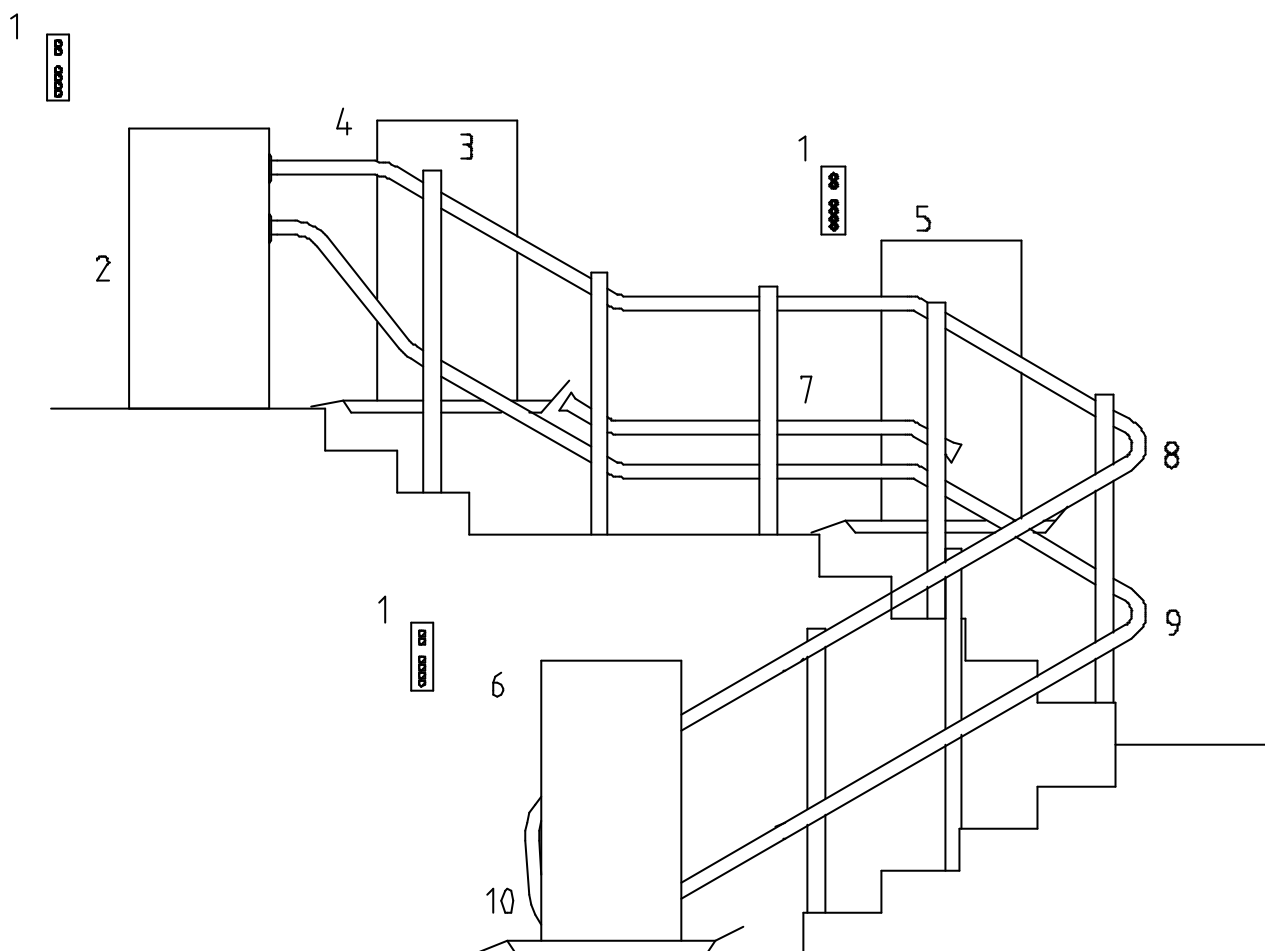
We recommend preventive checks, i.e. a regular servicing of the OMEGA stairlift will insure safe operation for a long time. Any abnormal operation of the lift should be reported to the servicing engineer. In the case of irregularities such as vibrations or abnormal noise emissions, do not use the lift. Call LEHNER for help! Follow all instructions given by LEHNER experts, fitting teams and service staff.



Lift up the upper armrest before moving onto the platform or leaving the platform when using a carriage with seat performance!

OMEGA STAIRLIFT

General layout:



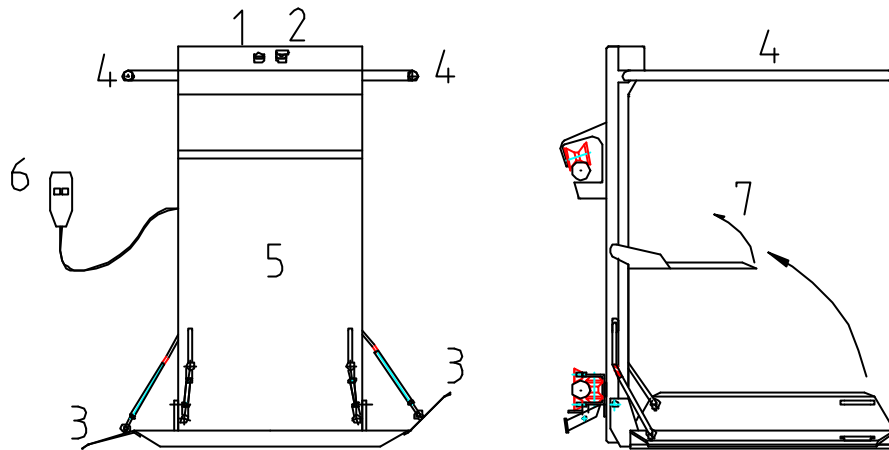
- | | | | |
|----|----------------------------|-----|---------------------|
| 1. | wall control | 6. | lower stop position |
| 2. | drive type K | 7. | horizontal railway |
| 3. | carriage | 8. | upper railway tube |
| 4. | upper stop position | 9. | lower railway tube |
| 5. | intermediate stop position | 10. | overspeed governor |

Technical data

X standard performance
O optional performance

feature	detail	drive type S	drive type K
railway	bends	X	X
	variation in gradient	X	X
	gradients 0...65°	X	X
	horizontal railway	O	O
	negative bend	O	O
	length up to 15 m	X	X
	length up to 25 m	-	X
	length over 30 m	-	O
speed	from 4,5 cm/sec	X	X
	up to 15 cm/sec regulated	O	O
power	0,37 and 0,55 kW	X	O
	0,75 kW	O	X
	1,0 kW and more	-	X
voltage	1 x 230 V	O	O
	3 x 230 V	O	O
	3 x 400 V	X	X
position of drive	on the upper end of railway	X	X
	somewhere far away	O	X
setup area	inside	X	X
	outside	O	O
Carriage model	platform for wheelchairs	X	X
	platform / folding seat	X	X
platform size	standard 800 x 1000 mm	X	X
	optional size	O	O
load capacity	standard 150 kg	X	X
	optional 225 kg	O	O
surface protection	powder coated	X	X
	hot galvanised	O	O
	stainless steel	O	O
noise	< 70 dB(A)	X	X

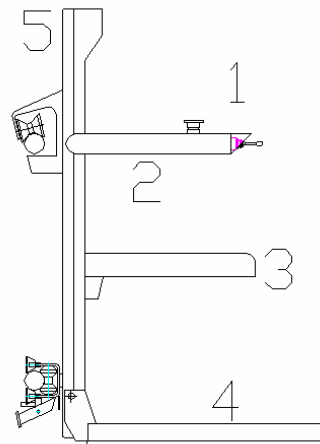
Carriage with platform for wheelchairs



- | | | | |
|----|--------------------|----|-----------------------|
| 1. | key switch | 5. | carriage |
| 2. | emergency STOP | 6. | directional control |
| 3. | ramps | 7. | folding seat (option) |
| 4. | barriers, liftable | | |

Carriage with seat performance

- | | |
|----|---------------------|
| 1. | directional control |
| 2. | armrest |
| 3. | seat |
| 4. | footrest |
| 5. | carriage, sidewall |

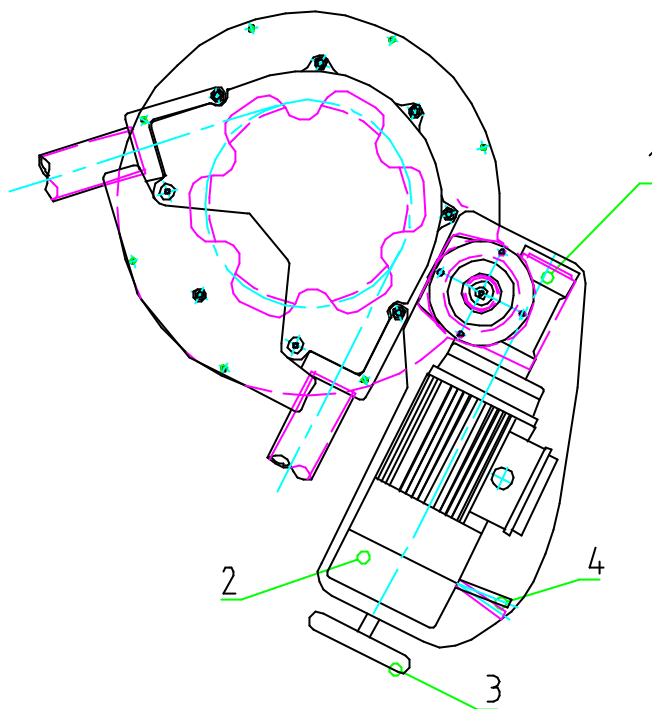


Horizontal railway

If the gradient is less than 20 degrees a third pipe is required to stabilise the platform. Horizontal sections may be necessary at half-landings or stop positions.

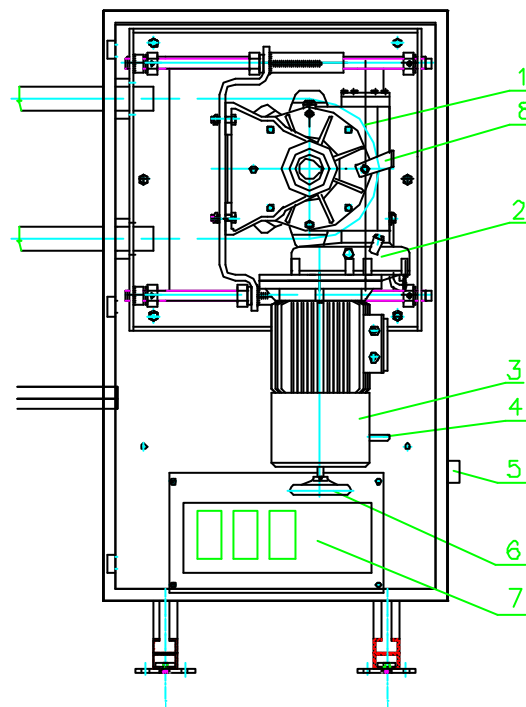
Drive type S

1. gear box
2. motor
3. hand wheel
4. hand lever for break release



Drive type K

1. drive wheel
2. gearbox
3. motor
4. hand lever for break release
5. main power switch
6. hand wheel
7. control box
8. slack rope switch



OPERATION

General

OMEGA lifts are safe and easy to use. The technical control of the lift is entirely adapted to the abilities of physically handicapped persons.

Please refer to the general layouts on the previous pages for a better understanding of the lift.

Main power switch

The main power switch connects the plant to the power supply system. For use of the lift, first turn on the main power switch. By switching off the main power switch, the whole plant can be divided from the circuit.

It is necessary to switch off the main power switch while repairs are done to the stairlift, especially in the drive box. The main power switch can be locked in both the "on" and "off" position with a padlock.

The main power switch is located either on the side of the drive box (drive type K) or on the external control box (drive type S).



Before operating the lift, ensure that the platform area is clear.

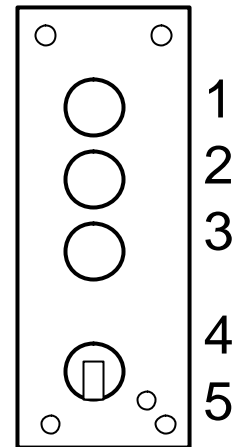
The following comments are valid only for carriages equipped with a manual platform:

Wall controls

Most lifts are equipped with wall controls that allow control from either end of the staircase.

Landing controls are fitted in the area of landing positions.

1. emergency stop, (if existing)
2. "Up"-Button
3. "Down"-Button
4. key switch
5. green light



Is the platform not on the level on which you want to move onto the platform, you can call the platform by using the wall controls:

Switch on the wall control by putting in and turning the key. The green light is on now. Press the "Up" or "Down"-Button and the platform moves into the direction as long as you hold the button. If the green light is not on, please make sure that the stairlift is not used from another person on the platform or from another wall control! In this case please turn the key back (=switch off your wall control) and wait until the lift is free for usage. Now you can switch on the wall control again and call the lift to your landing. If the wall control does not work anyway, please call our service team and ask for advise!

The carriage travels as long as you keep pressed the directional button on the wall control.



Wall controls only control the lift when the platform is folded up.

The carriage stops automatically at the stop position. To use the lift, fold down the platform (and seat). When the platform is folded down, all controls other than the platform control lose their function. This allows safe movement onto the platform.

Before moving onto the platform switch off the wall control, turn back the key to position "OFF" and take out the key.

Driving/Moving onto the platform

When the unlocked barrier is opened, the ramp will automatically fold down. The barrier down to the staircase is always locked (excepting at the lower stop position = special customer request).



Always face the direction of travel, and use the wheelchair brake for safety.

Close the barrier when on the platform. When the barrier is closed the ramps will automatically lift up. This is an additional safety feature that secures the wheelchair.

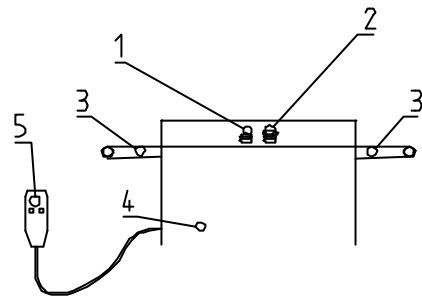


Lift up the upper armrest before moving onto the platform when using a carriage with seat performance!

Travelling

The carriage control on the sidewall contains of an directional control on spiral cable, a key switch and an emergency stop.

1. key switch
2. emergency stop switch
3. barriers
4. carriage
5. directional control (up/down)



When the passenger has moved onto the platform in accordance with the “Driving/Moving onto the platform” instructions, the platform control must be switched on. Put in the key and turn it into “ON” position. Now the carriage can be set in motion by pressing the “up” or “down” directional control.

The carriage stops at all stop positions (upper-, lower-, intermediate stop) automatically. When the directional control remains pressed during an intermediate stop, the carriage will stop for about two seconds; then the carriage will continue travelling towards the planned stop position.

The carriage stops also when the ramps or any other safety pad travels against obstacles!

Keep the directional control pressed until reaching the desired stop position. If the directional control is released, the carriage will stop immediately.

As a safety measure, the plant is equipped with an emergency stop (red button on the control). In the unlikely event that the stairlift does not stop when the directional control button is released, press the emergency stop button, a self-locking button, and the lift will stop immediately.

To unlock the emergency stop button, press it once more or turn it clockwise.

Leaving the platform

The stairlift has been designed to stop in the correct position at each station.

Release the directional control when the carriage has reached the desired stop position.

Switch off the platform control by turning the key into "OFF" position. Take out the key. Lift the unlocked barrier and the ramps will automatically descend to the turn down position. Now you can leave the platform.



After leaving the stairlift, lift down the barriers and fold up the platform.

By folding up the platform the wall controls (landing controls) will be re-activated. The carriage can be sent to the desired parking position.



Lift up the armrests before leaving the platform when using a carriage with seat performance!



To avoid unauthorised use of the stairlift, always switch it off with the key when not in use.

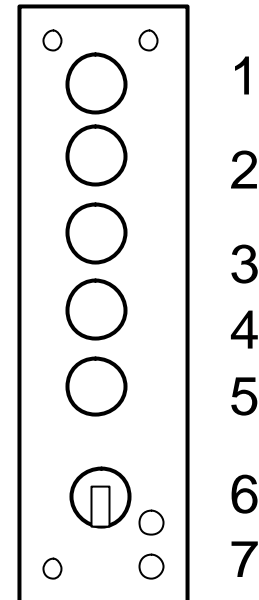
The following comments are valid only for
carriages equipped with automatic platforms and barriers:

Wall controls

All automatic platform lifts are equipped with wall controls that allow control from either end of the staircase and allow to fold down or up the platform.

Landing controls are fitted in the area of landing positions.

1. emergency switch, (if existing)
2. "UP"-Button
3. "DOWN"-Button
4. "Close"-Button
5. "Open"-Button
6. key switch
7. green light



Is the platform not on the level on which you want to move onto the platform, you can call the platform by using the wall controls:

Switch on the wall control by putting in and turning the key. The green light is on now. Press the "Up" or "Down"-Button and the platform moves in the direction as long as you hold the button. If the green light is not on, please make sure that the stairlift is not used from another person on the platform or from another wall control! In this case please turn the key back (=switch off your wall control) and wait until the lift is free for usage. Now you can switch on the wall control again and call the lift to your landing. If the wall control does not work anyway, please call our service team and ask for advise!

The carriage travels as long as you keep pressed the directional button on the wall control.



Wall controls only control the lift when the platform is folded up.

The carriage stops automatically at the stop position. To use the lift fold down the platform by using the "Open"-Button. Press the button as long as it takes that the platform is in horizontal position and the barrier has opened completely. Simultaneously the ramps turn down to the correct position enabling safe driving/moving onto the platform. When the platform is folded down, all controls other than the platform control lose their function. This allows safe movement onto the platform.

Before moving onto the platform switch off the wall control, turn back the key to position "OFF" and take out the key.

Driving/Moving onto the platform

You can move onto the platform after you have opened the platform and the barrier in accordance with the former chapter.

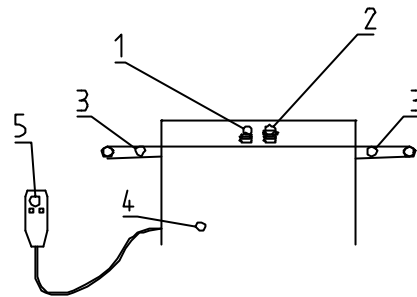


Always face the direction of travel and use the wheelchair brake for safety.

Travelling

The carriage control on the sidewall contains a directional control on spiral cable, a key switch and an emergency stop.

1. key switch
2. emergency stop button
3. barriers
4. carriage
5. directional control (up/down)



When the passenger has moved onto the platform in accordance with the “Driving/Moving onto the platform” instructions, the platform control must be switched on. Put on the key and turn it into “ON” position. Now the carriage can be set in motion by pressing the “up” or “down” directional control.

As soon as you press the directional control, the barrier closes and the ramp moves into travel position automatically. After the barrier is closed and the ramp is in up position, the stairlift starts to travel.

The carriage stops at all stop positions (upper-, lower-, intermediate stop) automatically. The barrier will open in all stop positions, if the directional control remains pressed. If you want to leave the platform, please look at chapter “Leaving the platform”. If you want to travel to the next stop position, stop pressing the directional button for a moment, then press the button for the same direction again! The barrier keeps closed (or closes again when it has been opened a little bit already) and the carriage starts to travel to the next station.

The carriage stops also when the ramps or any other safety pad travels against obstacles!

Keep the directional control pressed until reaching the desired stop position. If the directional control is released, the carriage will stop immediately.

As a safety measure, the plant is equipped with an emergency stop (red button on the control). In the unlikely event that the stairlift does not stop when the directional control button is released, press the emergency stop button, a self-locking button, and the lift will stop immediately.

To unlock the emergency stop button, press it once more or turn it clockwise.

Leaving the platform

The stairlift has been designed to stop in the correct position at each station. Keep the directional control button pressed until the barrier has folded up and the ramp has folded down to the correct position. When the barrier is fully opened (and the ramps are fully folded down), release the directional control.

Switch off the platform control by turning the key into "OFF" position. Take out the key. Now you can leave the platform.

After leaving the platform you have to switch on the wall control by putting in and turning the key. Press the "Up"-Button and the platform folds up as long as you hold the button. Press the "Up"-Button until the platform is folded up completely. Now switch off the wall control by turning back the key to position "OFF". Take out the key before traveling away from the stairlift.



After leaving the lift, fold down the barriers and fold up the platform.

By folding up the platform the wall controls (landing controls) will be re-activated. The carriage can be sent to the desired parking position.



Lift up the armrests before leaving the platform when using a carriage with seat performance!



To avoid unauthorised use of the stairlift, always switch it off with the key when not in use.

TROUBLESHOOTING

For safety reasons, the *OMEGA* stairlift is equipped with several electrical and mechanical locking devices. The stairlift will not work if any of these devices are tripped or if the order of events is incorrect. By following the instructions provided in the ensuing paragraphs, the user will be able to determine the reason for breakdown. Contact our service team! You must not manipulate, modify or remove any safety feature of the stairlift.

Work through the following instructions paragraph-by-paragraph. Do not skip any part! Be sure that the landing controls are deactivated whenever the platform is folded down.

Before troubleshooting, pay attention to the following:



When a landing control is activated, it automatically deactivates all other wall controls, i.e., the complete lift can only be controlled by one control at a time.



Please check if the main power switch, located either at the side of the drive box (Type K) or on the top of the separate control box (Type S), is switched on (position I).



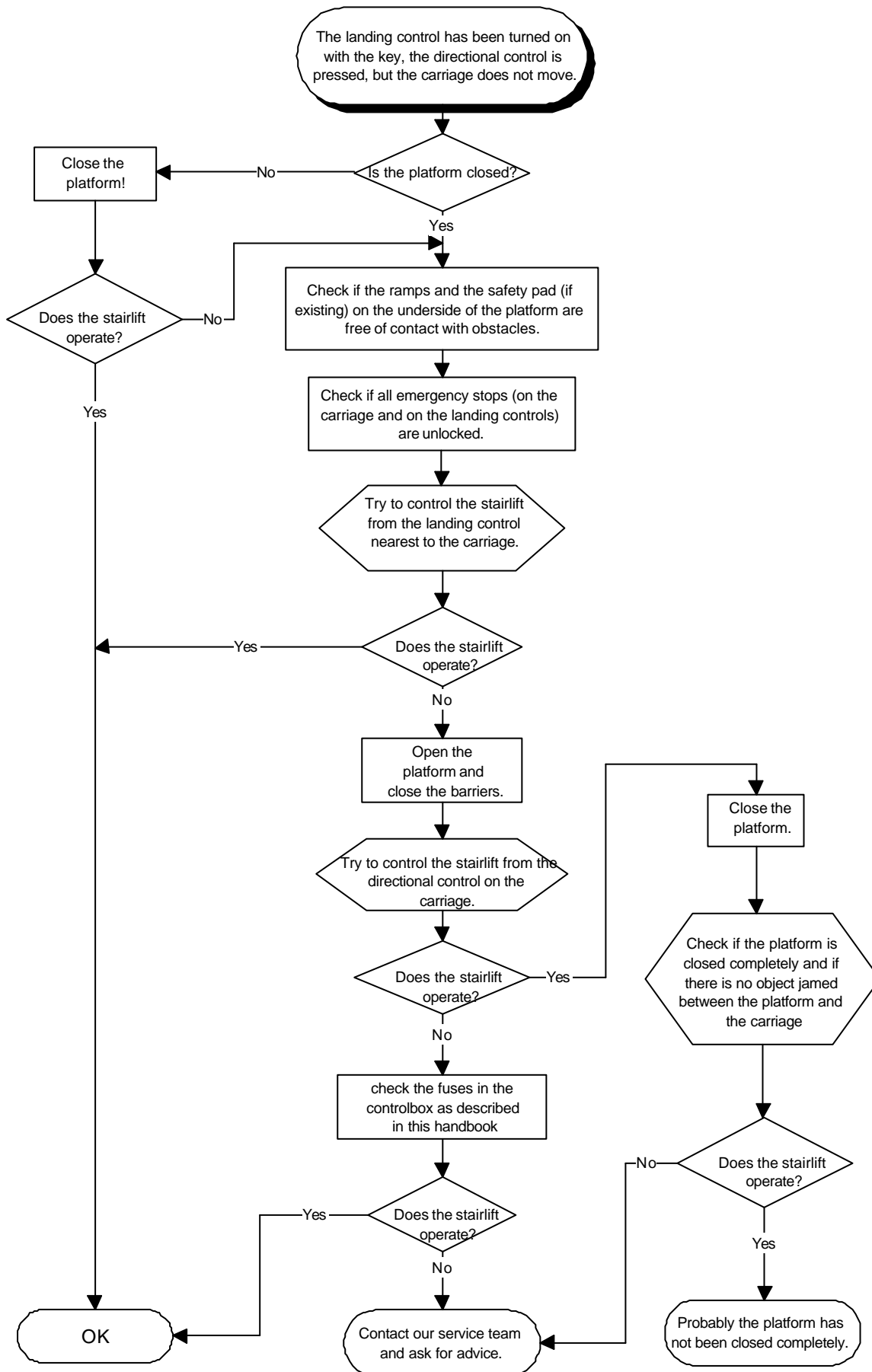
Please check if the fuses in the distribution box of your house are working and turned on.

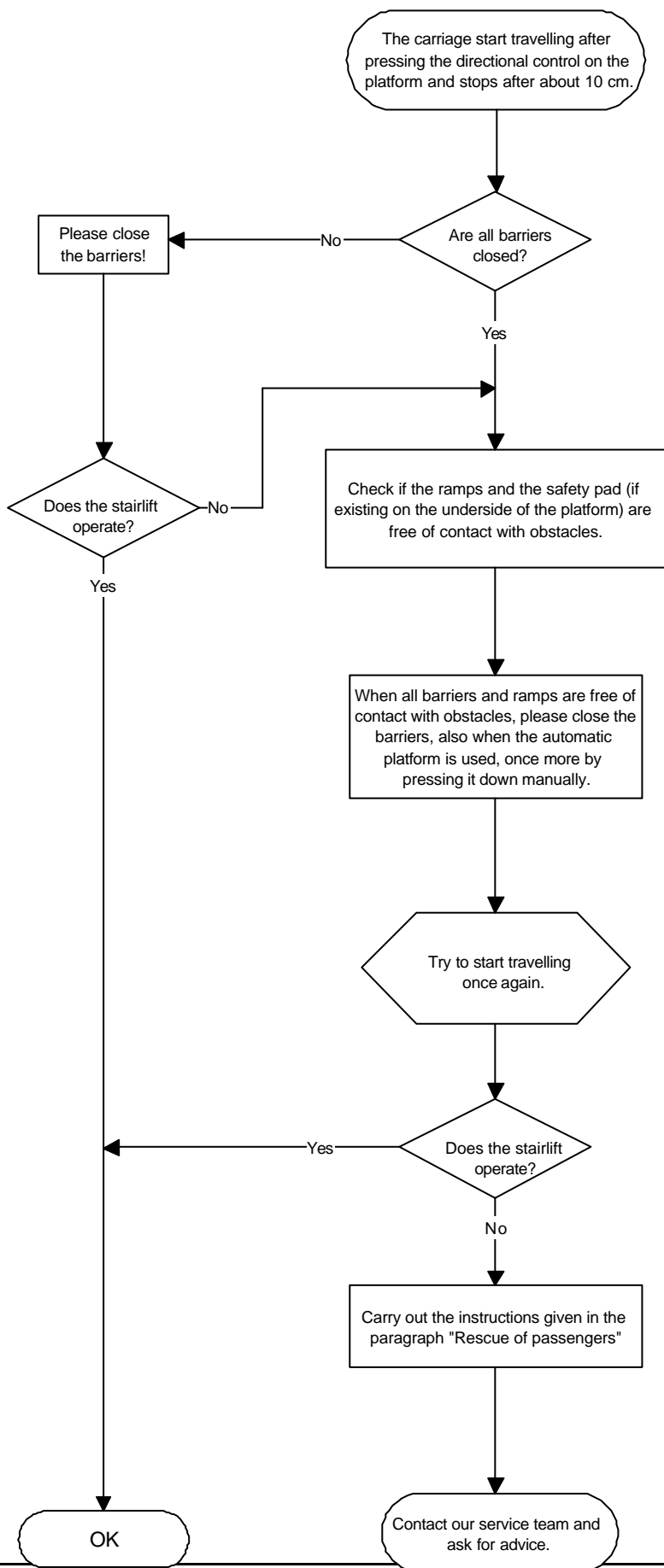


Check the electric fuse

Turn off the stairlift by switching off the main power switch. Open the front door of the drive box* and dismantle the plastic cover of the control box (there is no plastic cover for drive type S*). Check if the fuses F1 – F2 located on the right-hand side of the control are in the correct position (the blue switch must be up). Press the protective motor switch FB1 once for a short time.

* The control is situated in a separate box in case of drive type S.
The main power switch is situated in the door of this box.





RESCUE OF PASSENGERS

When the carriage stops between two stations and all instructions given on the previous page are checked, the passenger must be rescued from the carriage.

Case 1

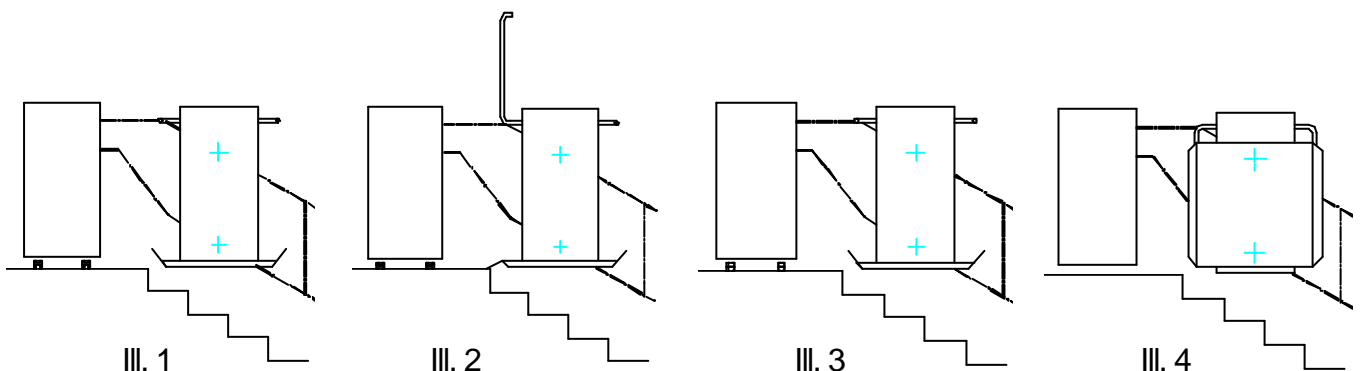
The occupied platform is near a stop position.

Notice:

Position of the hand lever for break release and the hand wheel is explained on page 9.

The description of the main power switch is on page 10.

1. Turn off the main power switch.
2. Take the hand wheel and insert it into the hole located at the back of the motor.
3. Tighten the hand lever for break release and turn the hand wheel until the next station has been reached. The direction "UP" is indicated on the hand wheel (see Illustration 1).
4. At every landing the barrier can be opened manually at the side where leaving the platform is desired (see Illustration 2).
5. Now the wheelchair driver can leave the platform.
6. If using a manual platform, close the platform as usual. That means: First close the barrier and then fold up the platform!
7. If using an automatic platform, first fold down the barrier to the closed position (see Illustration 3). **Then the platform can be closed without any problem (see Illustration 4). The platform must be locked with the padlock on the carriage.**
8. Call your service team!



Case 2

The occupied platform is not close to a stop position.

Notice:

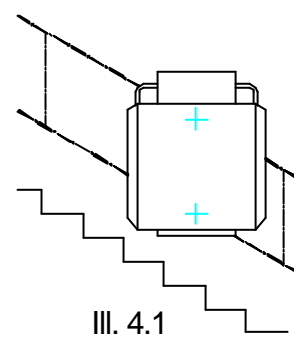
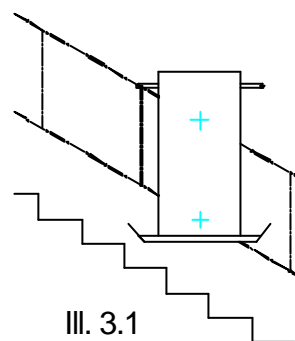
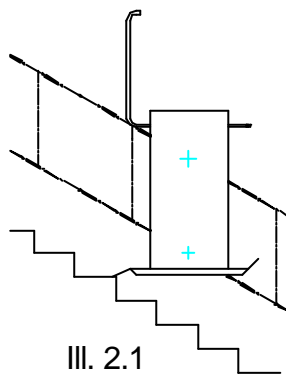
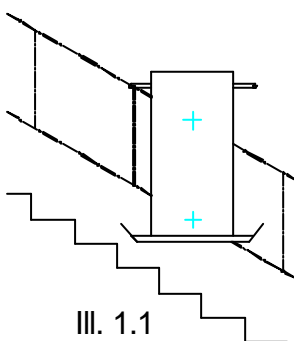
Position of the hand lever for break release and the hand wheel is explained on page 9.

The description of the main power switch is on page 10.



For the rescue of the passenger **two persons** are needed! If there is only one person available, it is necessary to wind the carriage into the next station (see case 1).

1. Turn off the main power switch.
2. Take the hand wheel and insert it into the hole located at the back of the motor.
3. Tighten the hand lever for break release and turn the hand wheel until reaching the next half-landing or straight part of the staircase (see Illustration 1.1). Do not stop at a curved area of the rail!
4. *Emergency unclamping of the barrier.* In order to open the barrier when not in a station, please carry out the following instructions. It is only permitted to open the barrier up to the stairs (see page 20). Otherwise one could face the danger of falling or rolling down.
5. The wheelchair driver can now be lifted down from the platform (see Illustration 2.1).
6. If using a manual platform, close the platform as usual. That means: First close the barrier and then fold up the platform!
7. If using an automatic platform, first fold down the barrier to the closed position (see Illustration 3). **Now the platform can be closed without any problem (see Illustration 4.1). The platform must be locked with the padlock on the carriage.**
8. Call your service team!



Emergency unclamping of barriers:

For unclamping a barrier somewhere out of a station, press the lever located at the back of the carriage (see illustration 5).

The position of this lever is shown in detail in Illustration 6 and 7.

Attention:

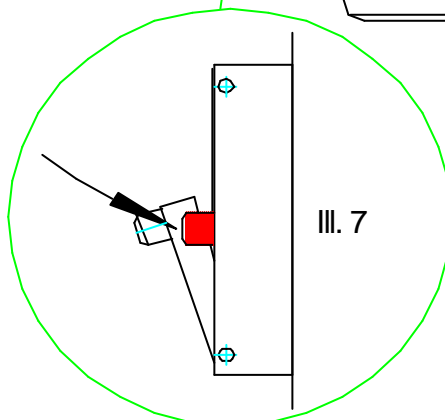
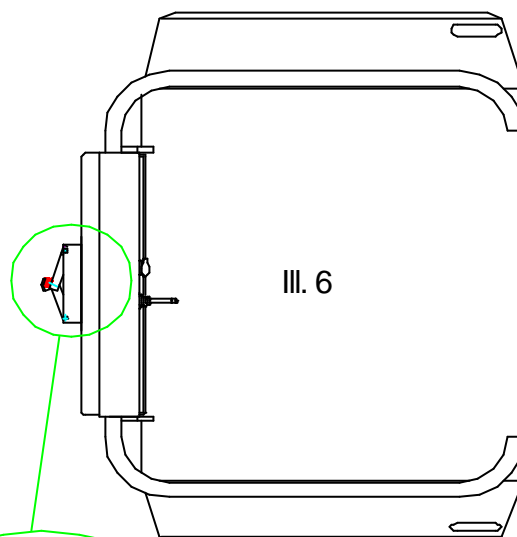
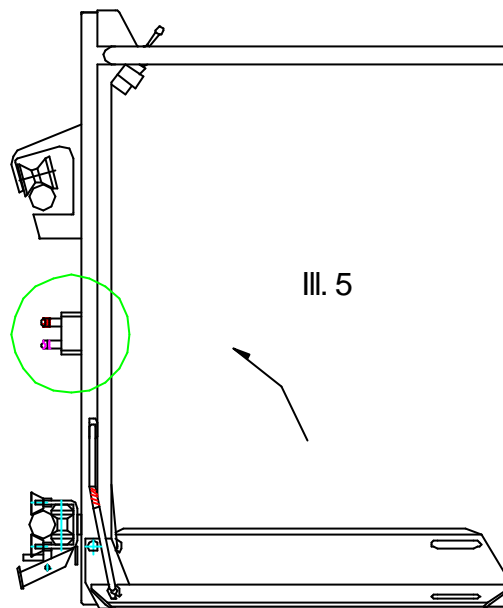


The red, marked lever must be pressed for unlocking the barrier up to the stairs.



Do not press the unmarked lever!

Press and hold this lever and open the barrier with an abrupt pull!



OPTIONAL FEATURE

Safety pad

The safety pad on the underside of the platform serves as an additional safety feature when travelling downstairs. The safety pad is pressure sensitive and will stop the lift immediately if it makes contact with any obstacle. The obstacle must be removed in order to get the stairlift travelling downstairs again. Travelling upstairs is possible anyway.

ERECTION

Electrical installation

Only LEHNER or one of our authorised partners is allowed to carry out the electrical installation.

If someone else does the electrical installation, you will lose the right to use the lift.

LEHNER does not assume any liability for damages caused by the electrical installation carried out by an unauthorised third party.

Installation

Only LEHNER or one of our authorised partners is allowed to install the stairlift.

Handling or rebuilding the lift will result in the loss of permission for using it.

LEHNER does not assume any liability for damages caused by the improper installation of the lift carried out by an unauthorised third party.

Dismantling

Only LEHNER or one of our authorised partners is allowed to dismantle the stairlift.

We do not take over any liability for damages caused by the contravention of this rule.

MAINTENANCE

It is absolutely necessary that the lift is regularly serviced.

It is recommended that a service contract be made with the supplier.

LEHNER or any of our authorised partners offers a special maintenance program adapted to the frequency of use.

Attention!!!



When the legal provisions do not prescribe a technical approval test or a yearly inspection carried out by a council or a civil engineer, we demand a yearly inspection of all safety components in the course of a service. We will refuse all liability if neither a service contract nor regular servicing is arranged.

Check-up and care

Check the following points at regular intervals, at least once a week.

1. The carriage must not start travelling until the barrier is completely folded down and the ramp is turned down to the appropriate position.
2. It should be impossible to fold up the barriers while travelling. This should be tested between two stop positions.
3. Check if the barriers are closed and if the ramps are folded up while travelling. If the ramps run against an obstacle or if the user presses down the ramp, the carriage will have to stop immediately. The linkage between barriers and ramps must be in faultless condition (safely screwed on, no damage of the rope).
4. The carriage must stop automatically at every stop position.
5. The carriage must stop when the directional control is released.
6. The emergency stop button must put the whole stairlift out of operation.
7. If an emergency call system is in place, ensure that it works.
8. Remove dust and dirt from the tubes of the railway at regular intervals.
9. Keep the access free to the drive and to the main power switch.

Pay attention! Dust or other things must not fall into the slit on the upper tube of the railway.

For cleaning the stairlift use a damp cloth and normal household stains.

All further maintenance work is only allowed to be done by LEHNER or any of our authorised partners.